

Customizing MasterPointer

Did you know that you can access your favorite MasterPointer tools without requiring the MasterPointer Toolbar? You can!

Did you know that your students can use MasterPointer as well in order to annotate their own work and presentations? You can!

Both of these things can be accomplished by creating special desktop icons for the MasterPointer tools you use the most – and all you have to do is drag and drop.

Creating Custom Desktop Icons

To create custom desktop icons, you must first run MasterPointer. MasterPointer is automatically installed as part of Vision5, but may also be purchased separately.

On the Teacher Computer

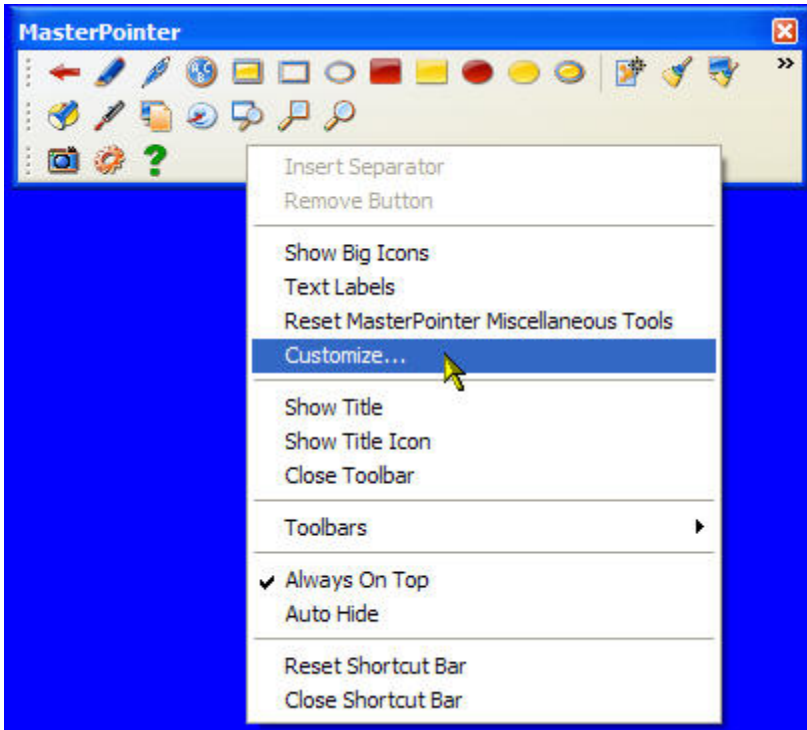
By default, MasterPointer is set to run at startup. You can tell if it is running because an icon appears in your System Tray (near the clock):



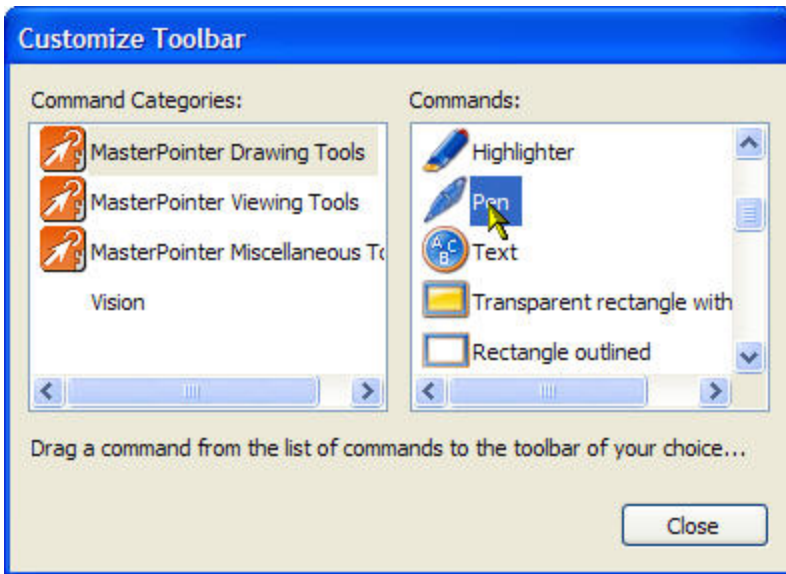
If you see this icon but do not see the MasterPointer Toolbar itself, double-click the icon and the Toolbar will open:



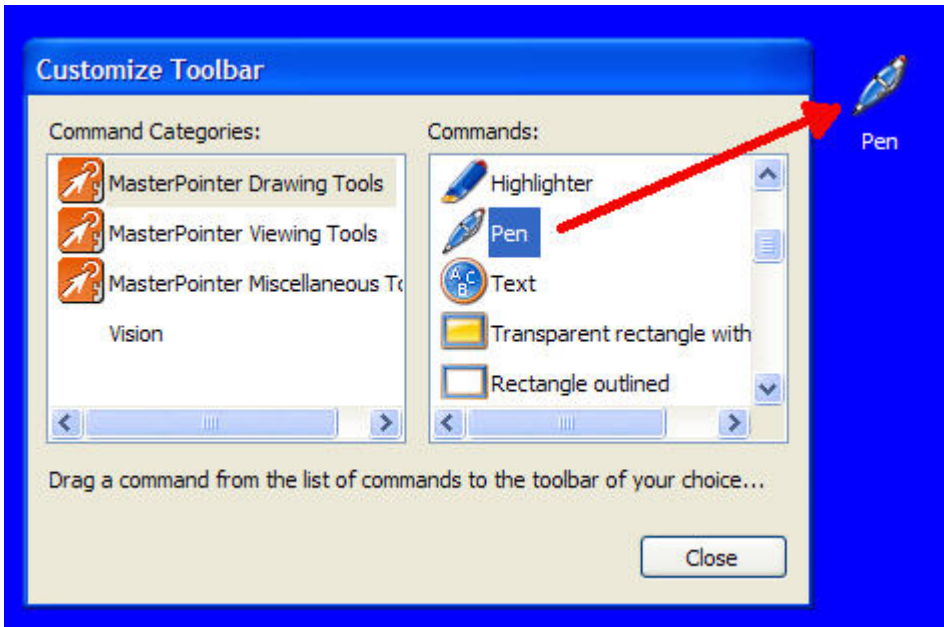
Right-click anywhere on the MasterPointer Toolbar to bring up a pop-up menu, and select "Customize":



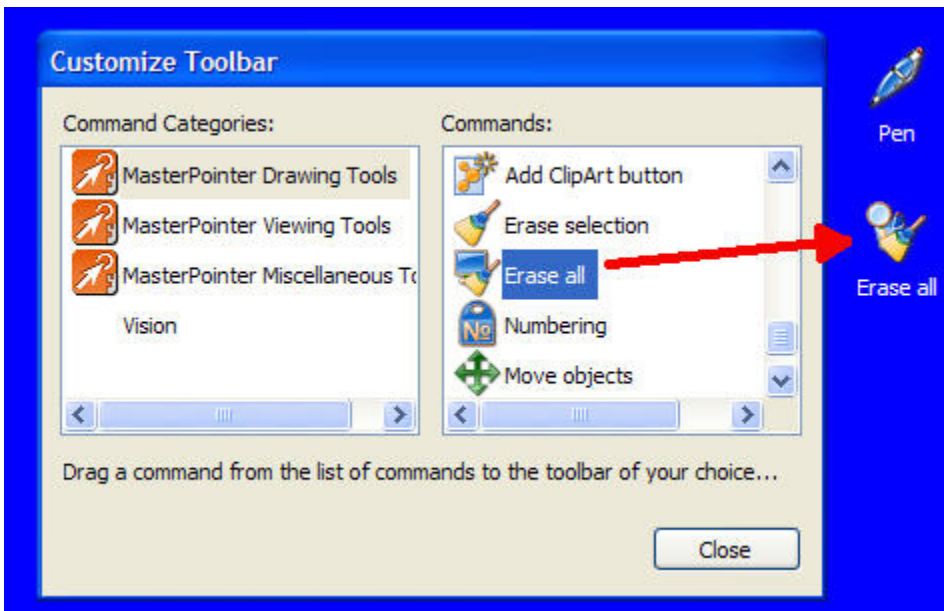
This will open the Customize Toolbar dialog. Choose a tool category on the left-hand side of the window. The individual tools will appear in the right side. Scroll down to choose a specific tool:



When you find an individual tool that you like, simply drag it up and place it on your Windows desktop:



Double-clicking the new desktop icon activates the tool. Since you may elect not to display the MasterPointer Toolbar, you will want to place a copy of the "Erase All" tool on your desktop as well so that you can clear the annotations:




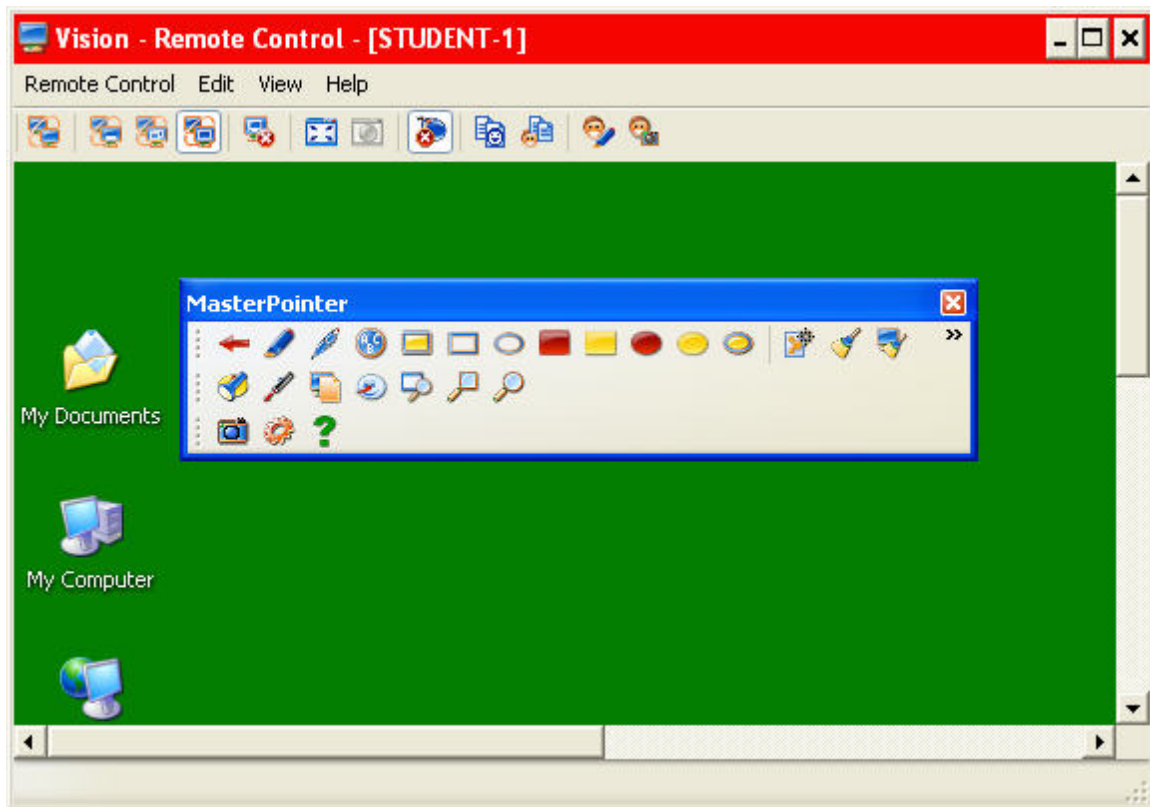
Double-clicking the "Erase All" icon on the desktop clears the screen of all MasterPointer annotations.

On the Student Computer

MasterPointer is also installed on your student computers when Vision is installed. However, it is not generally available to the students; it can only be run by the Teacher during a Remote Control session. By placing MasterPointer icons on the student desktop, you can grant your students access to this powerful annotation tool.

To do this, you need to use Vision to Remote Control the student computer from the Teacher computer by double-clicking the icon of the student computer within the Vision console. Once the Remote Control session has started, launch MasterPointer

on the student computer by clicking the MasterPointer button  on the Remote Control Toolbar.



Now you can perform the same operation on the student computer as was done on the Teacher computer to add MasterPointer icons to the student's desktop

Note: if your students each login with a unique name and password, you will need to place the MasterPointer shortcut icons in the folder:

C:\Documents and Settings\All Users\Desktop

You must be logged in to the student computer as a user with administrative privileges in order to do this.