



GenevaLogic

ACTIVE TEACHING SYSTEMS



# Protect-On

## **User Guide** Version 4.2

For  
WIN 9x / ME  
WIN NT / 2000 / XP

## Security Notice

**ProtectON** does not prevent booting from an alternative drive (floppy, CD-Rom or external drive). Public access computers should be configured to boot from the primary hard drive only (usually the C: drive) and the BIOS should be password protected. Please refer to the computer manufacturer's directions regarding the configuration of CMOS/BIOS for your computer.

**ProtectON Pro** is our hardware solution for workstation security and provides complete protection for boot activity. Please contact GenevaLogic for more information:

[www.genevalogic.com](http://www.genevalogic.com)

## Warning

\* Please take the normal precaution of backing up your computers before installing ProtectON as you would with ANY new software or security product that makes a significant change to your hard drive.

\* Please disable all virus protection, background utilities and close all applications before installing ProtectON.

\* Please do not use ProtectON with compressed drives.

## System Requirements

Minimum 70 Meg of free disk space

32 Meg RAM WIN 98/ME/NT/2000/XP

ProtectON is NOT compatible with compressed drives.

## Contact Information

[www.genevalogic.com](http://www.genevalogic.com)

### Worldwide Headquarters

**GenevaLogic AG**

Unterdorfstrasse 66

CH-4934 Madiswil

Phone: +41 (0)62 957 70 40

Fax: +41 (0)62 957 70 50

E-Mail: [info@genevalogic.com](mailto:info@genevalogic.com)

### United States Office

**GenevaLogic Inc.**

2950 SE Stark St. Suite 200

Portland OR 97214

Phone: Toll Free (866) 725-7833

Fax: (503) 236-6403

Technical Support Toll Free (866) 725-7803

E-Mail: [info@genevalogic.com](mailto:info@genevalogic.com)

Index

<b>1.-Introduction .....</b>	<b>4</b>
<b>2.-Installation .....</b>	<b>4</b>
<b>3.-Configuration.....</b>	<b>5</b>
3.1. Drives Configuration Window.....	7
3.2. Menu Items .....	8
<b>4.-Administration Console.....</b>	<b>9</b>
<b>5.-Uninstall ProtectON .....</b>	<b>10</b>

## 1. INTRODUCTION

ProtectON software provides a simple, effective solution for preventing permanent changes to shared PCs. Installed on over 25,000 computers worldwide, ProtectON reduces computer downtime and tech support resources in multi-user environments by allowing instructors to completely restore classroom and lab computers to their original configuration upon restart. ProtectON's special scheduling feature allows instructors and lab supervisors to schedule when the hard drive is restored to the original configuration either every time the computer is rebooted, on a specific day or manually.

## 2. INSTALLATION

### **Installing ProtectON as a newly downloaded file:**

ProtectON can be downloaded and installed from the GenevaLogic website or from a link that you may have received by email. If you have downloaded the zip file, simply unzip and click on setup.exe to install ProtectON. The setup.exe file and the license key file must reside in the same directory to license ProtectON during the installation. If you would like to move the setup.exe file to a shared location, network drive, folder or disk, just be sure to copy the license key file to that same location so your installation will run and be licensed correctly.

### **Installing ProtectON from a disk:**

If you purchased ProtectON on disk, choose ProtectON from the menu items on the disk and run the installation. If you would like to copy the ProtectON installation files to a shared location, network drive, folder or another disk, be sure to copy the license key file to that same location so your installation will run and be licensed correctly.

### **Converting ProtectON from a trial version to a purchased version:**

After your purchase, you will generally be sent a confirmation email. This email has an attachment that is your license key file for the full version of ProtectON. Save this attachment to the directory that ProtectON was installed into.

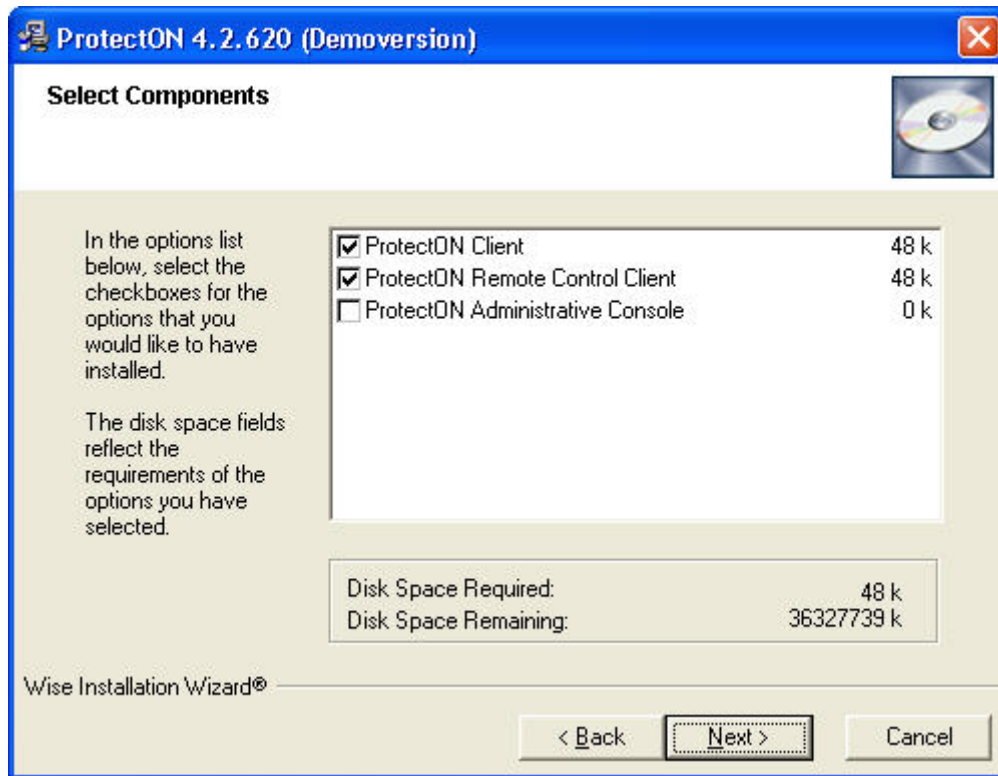
The default location for ProtectON after installation is:

c:\ProgramFiles\MasterSolution\ProtectON

You will be replacing the original license key file in this folder so your computer will ask you if you would like to replace the file, answer "Yes" to this question.

**During the installation:**

You will have a choice of what components you would like to install.



1. **ProtectON Client:** (Install on the Client/Student Computers)  
Installs ProtectON on the workstation. Install this module on any computer that requires protection.
2. **ProtectON Remote Control Client:** (Install on the Client/Student Computers)  
Installs the remote control client. This module allows the workstation to be controlled over the network from the Administrator console.
3. **ProtectON Administrative Console:** (Install on the Instructor/Administrator Computer)  
Installs the Administrator console. This console will allow you to control ProtectON security settings over the network on computers that have the Remote Control Client.

You will be requested to restart your computer after the installation.

### 3. CONFIGURATION

After installation, the default configuration for ProtectON is 'Off'. The 'Off' status is indicated by the ProtectON symbol in the system tray with the small 'x' beside it:



When the product is turned 'On' and protection is active, the ProtectON symbol looks like this:



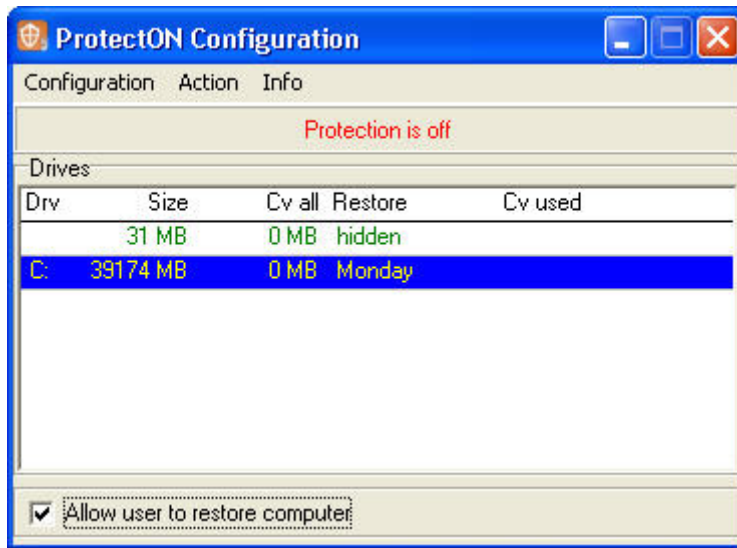
**(Hint:** You can right click on these symbols in the system tray to get the current status of the protection or to initiate a reboot/shutdown of the computer.)

To configure ProtectON and activate the protection, go to:

Start Menu → All Programs → MasterSolution → ProtectON → Configuration

The Drive Configuration window will appear and give you several options for configuring ProtectON.

### 3.1. Drives Configuration Window



#### Drives:

The first thing you will notice when you open the Drive Configuration window is the middle portion of the window. This is a table that lists all of the available drives on the local hard disk and the status of the current protection. Other partitions, including boot partitions may also be shown.

<b>Drv</b>	Drive name
<b>Size</b>	Size of the hard drive and/or partition
<b>Cv all</b>	Size of the cache volume area (This is chosen automatically by <b>ProtectON</b> when the protection is switched on.)
<b>Undo</b>	Shows the protected mode. (Only active after ProtectON is turned on and the computer is rebooted)
<b>Cv used</b>	Utilization of the cache volume. ( <b>IMPORTANT:</b> When the utilization of the cache volume reaches 80%, reboot your computer and empty this area to avoid problems)

#### Product Status:

The product status appears in red above the list of drives.

<b>Protection is on</b>	Protection has been activated. All changes to the hard drive will be discarded at the selected time.
<b>Protection is off</b>	ProtectON is not active. The computer is unprotected and all changes made to the computer will be retained.

### Allow Users to Restore Computers:

At the bottom of the Drives Configuration Window is a check box that allows users to restore the drive of the computer manually without instructor intervention. This is not a required setting but an option to make available to your users if you would like them to be able to restore computers on their own. After your initial installation of ProtectON this box will be grey and unavailable. The reason for this is because the default setting for restoring the computers after installation is to restore after every reboot so this setting is unnecessary. In fact, any time the computer is set up to restore at every reboot this setting will become unavailable. To use this feature, the computers must be set up to restore on a specific day or manually. This feature is protected by the User password.

If you would like to allow users to restore computers:

- 1) Go to Configuration → Options and choose a day of the week, month or manual settings to restore the computer. Any other setting besides the choice to restore at every reboot will work.
- 2) Go to Action → Change Password → User and set up a User password. This is the password that the User will need to roll back changes that have been made to the computer and restore the hard drive.
- 3) Instruct the user to right click on the ProtectOn icon in the system tray to reboot and restore the computer. They will not have access to the configuration window so they will need to use the system tray to undo hard drive changes.

## 3.2. Menu Items

### Configuration:

Under this menu, choose 'Options' to determine when you would like ProtectON to restore the hard drive and discard all changes that have been made to the computer. You may choose to do it every time the system is restarted, on a specific day of the week, once per day, the first day of every month, or manually by request only. Your choice will be active after you have enabled **ProtectON** and restarted the computer. These settings can also be accessed by double-clicking on a partition in the drive window.

<b>System Start</b>	Restore the computer every time the system is restarted.
<b>Day of the week</b>	Restore the computer on a specific day of the week.
<b>Daily</b>	Restore the computer every day.
<b>First of the month</b>	Restore the computer on the first day of the month.
<b>Manual</b>	Manually restore the computer when you choose.

### Action Menu:

Use this menu to define your passwords and activate ProtectON. These settings can also be accessed by right clicking on the partition in the drive window.

### Change Password window:

Use this window to define or change your passwords.

**Admin Password:** The Admin password serves two functions. It allows access to the ProtectON configuration settings on the local computer. It also is the password that will be required to remotely change security settings and send out ProtectON commands from the Administrative Console. You may use a different Admin password for groups of computers to control different machines remotely as a group.

**User Password:** The User password can be set if you would like users to be able to restore the computers without instructor intervention. This password can be set at any time. However, the

setting to have users restore computers is at the bottom of the configuration window (The check box that says “Allow Users to Restore Computers”) This setting is not available if ProtectON is set to restore the computer at every reboot - which is the default after installation.

**IMPORTANT:** Please make a note of the passwords that you create!

**Don't Lose Your Admin Password – You need this password to:**

- 1) Configure ProtectON next time you open the Drive Configuration Window.
- 2) Control user computers remotely. The Administrator Console will ask for the User Password before you choose a command to send over the network.
- 3) Change Passwords – You need this password to change the ProtectON password for Administrator or Users.

### Enable Protection

To activate ProtectON, select enable protection and reboot your computer. This setting can also be accessed by right clicking on the partition in the drive window.

#### Action Menu:

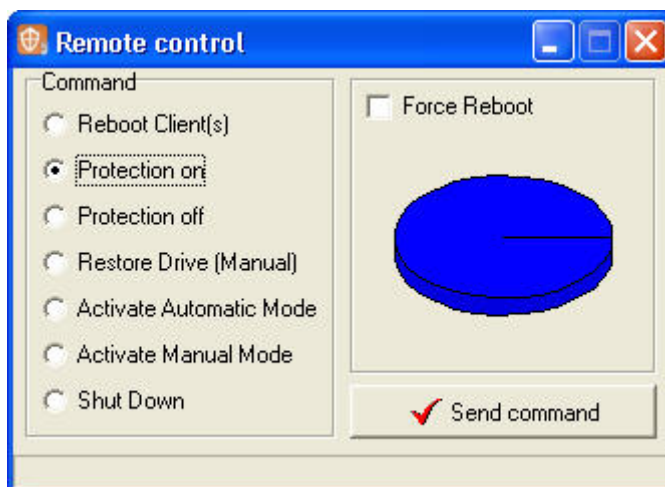
This menu item brings up general product information and version number.

## 4. ADMINISTRATION CONSOLE

The Administrator Console allows administrators to control ProtectON or shut down PCs over a network. All computers being controlled must reside on the same IP segment as the Administrator Console PC. The ProtectON driver and the Remote Control Client must both be installed on the target computers.

To use the administrator console go to:

Start Menu → All Programs → MasterSolution → ProtectON → Remote Control



**Command:**

The left side of the Administrator Console window contains the list of commands that can be run on the target client computers.

<b>Reboot Client (s)</b>	The client computer(s) is rebooted without any changes.
<b>Protection on</b>	The client computer(s) is rebooted and ProtectON is turned on.
<b>Protection off</b>	The client computer(s) are rebooted and ProtectON is turned off.
<b>Restore Drive (Manual)</b>	The client computer(s) are rebooted and restored. Use this when you want to restore the computers at a time that has not be scheduled.
<b>Activate Automatic Mode</b>	The client computers(s) are rebooted and the 'Automatic' mode is activated.
<b>Activate Manual Mode</b>	The client computer(s) are rebooted and the 'Manual' mode is activated.
<b>Shut Down</b>	The client computers(s) are shut down.

On the right side of the Administrator Console window is the 'Force Command' check box. Check this box if you want to force all applications and open network connections to close on the client computers after you send a remote command.

When you have chosen the desired settings, click the 'Send Command' button to send your command to the client computers over the network. A password window will open and you will be requested to type in the 'Admin Password' for the computers that you would like to control. All computers with the same password will receive the chosen command.

## 5. UNINSTALL PROTECTON

To uninstall ProtectON, open the ProtectON configuration window, turn protection OFF and reboot the computer. Go to the **Control Panel** on the computer and open "Add/Remove Programs". Select **ProtectON** and follow the instructions.