

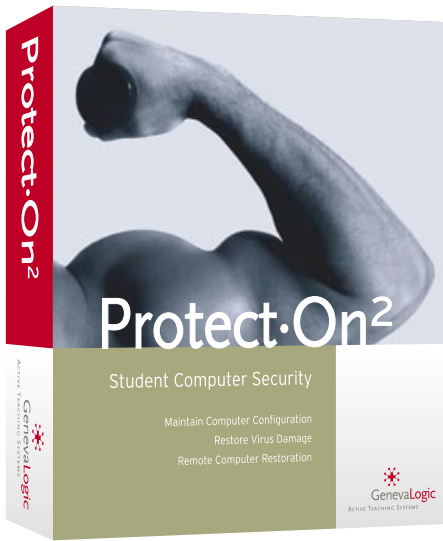


GenevaLogic

ACTIVE TEACHING SYSTEMS

# Protect-On<sup>2</sup>

## Student Computer Security



- Restore computer configuration
- Erase virus damage and unwanted changes
- 100% recovery with restart
- Unprotected drivespace allows students to save files
- Remote console provides client status and management
- View student security status in the console
- Wake on LAN for client computers
- Compatible with scheduled automated software updates



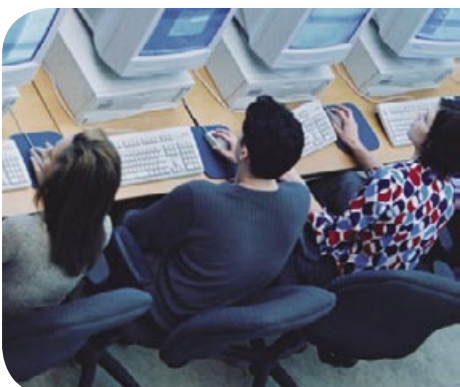
## Restore

Restore all student computers to their original configuration with a quick restart. No more frustrating down time. Automatically disable computers during scheduled restoration events. Prevent user access while machines are being updated.



## Prevent

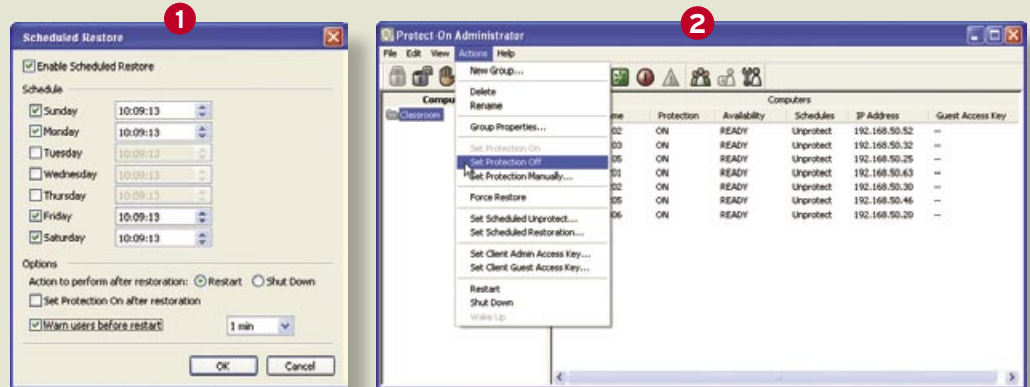
Roll back virus damage and unwanted user changes on any machine. A simple restart and the computers are back to normal with no damage, downloads or games.



## Control

Remotely turn protection on and off, reboot, change settings or wake the student computers up from the administrator's console. Scheduled unprotect time for system changes, such as virus updates. No more running around to change security settings.

## Protect-On2 Affordable Security for Student Computers

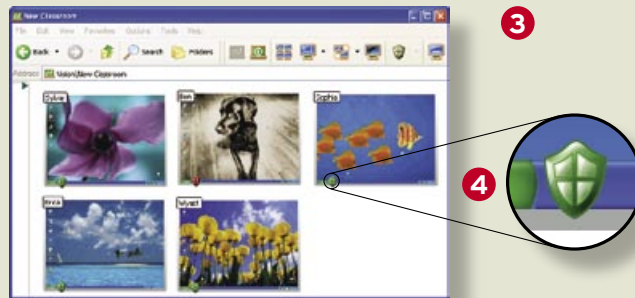


- 1 Restoration Scheduler** Remotely configure the restoration schedule of the computers. Restore machines every time they are rebooted, schedule pre-set dates and times for restoration or perform restorations manually.
- 2 Administrative Console** Control security on student machines remotely. Send out commands to restart client machines, turn security off and on, restore specific computers immediately, wake up or shut down. Manage machines individually or by a group.



Protect-On2

## Built-in Integration with Vision Classroom Management Software



- 3 Manage Security Settings** Protect-On2 can be used with Vision classroom management software. Easy 'one button' integration with the Vision toolbar makes it simple to open the security console and manage security settings.
- 4 Vision Dashboard Integration** Use the Vision dashboard to keep track of which computers have security active and are protected in the classroom. Open the Protect-On2 console right from the Vision dashboard to change settings.

**System Requirements** Windows 2000 (some restrictions)/XP/Vista; 333Mhz or greater Pentium class; 256MB RAM; 100MB free disk space; 4MB Video RAM or better; 100Mbps Ethernet card; SCSI and Dual Hard Disk drives are not supported.



**GenevaLogic**

ACTIVE TEACHING SYSTEMS

**SWITZERLAND**

Chasseralstrasse 1-9  
CH-4900 Langenthal

+41 (0)62 957 70 40 | Fax +41 (0)62 957 70 50

**UNITED STATES**

15725 SW Greystone Court, Suite 105  
Beaverton, OR 97006

866.725.7833 | Fax 503.352.3413

Authorized distributor/reseller

[www.genevalogic.com](http://www.genevalogic.com)

Copyright © 2007 GenevaLogic. All rights reserved. GenevaLogic, Protect-On2, Vision and Classroom Management Software are trademarks of GenevaLogic.