

Vision⁶ in Brief

Floating Toolbar

After starting your teacher computer, the **Vision Toolbar** appears at the top of your screen (move your mouse to the top of the screen). The toolbar slides out of the way when not in use.



Vision connects automatically to your default classroom. If Vision is not configured to connect automatically, click the «connect classroom» button on the Vision Toolbar.

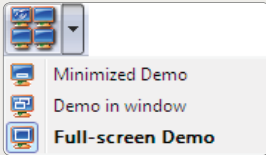
Dashboard




The **Vision Dashboard** is the management console of Vision, used to create and manage classroom and groups of students within the classroom. Use the dashboard to see an overview of all computer users in the classroom, or to use the Vision features for an individual group of students.

Basic Features

Demo Share your screen with the class.



1. Full-screen: Focus the attention of the class. Lock all keyboards & mice.
2. Windowed: Allow students to work while using your presentation as a reference.
3. Minimized: Students can access your presentation, if necessary, from the taskbar.

 **Stop** End Demo mode by clicking **STOP**.



Blank Screens and Lock Keyboards and Mice Blank screens and lock keyboards and mice to eliminate distraction during lessons and announcements. **Release** the computers by clicking **STOP**.



Supervision Supervise the activities of the students from your work station. Automatically scroll through the class screens or page through at your own pace. To **return** to your normal screen, close the window.



Live-Supervision See exactly what a specific student is doing in real time, in full-screen size. Change to Remote Control with a double click to help a student solve problems. To **end**, close the window.



Remote Control Take control of a student's computer remotely. Select the student computer you'd like to manage from a list of students in the class. To **end**, close the window.



Virtual Teacher Allow a student to share his or her screen with the class. Showcase exceptional work or allow one student to lead the class in an exercise. To **end**, click the **STOP** button.

Plug-Ins



Focus Student Attention. With Pointer, you can annotate or highlight text or graphics during presentations with more than 20 annotation tools. Emphasize key points with arrows, highlighters, magnifiers and spotlights.



Control Web Surfing During Class. Use Surf-Lock to allow access to teacher-approved sites or turn off web access completely to avoid distractions.



Launch and Lock Applications. With App-Control on, students can only use the applications the teachers permits. Focus student activity during tests and assignments by only allowing access to selected applications.



GenevaLogic

ACTIVE TEACHING SYSTEMS

www.genevalogic.com